

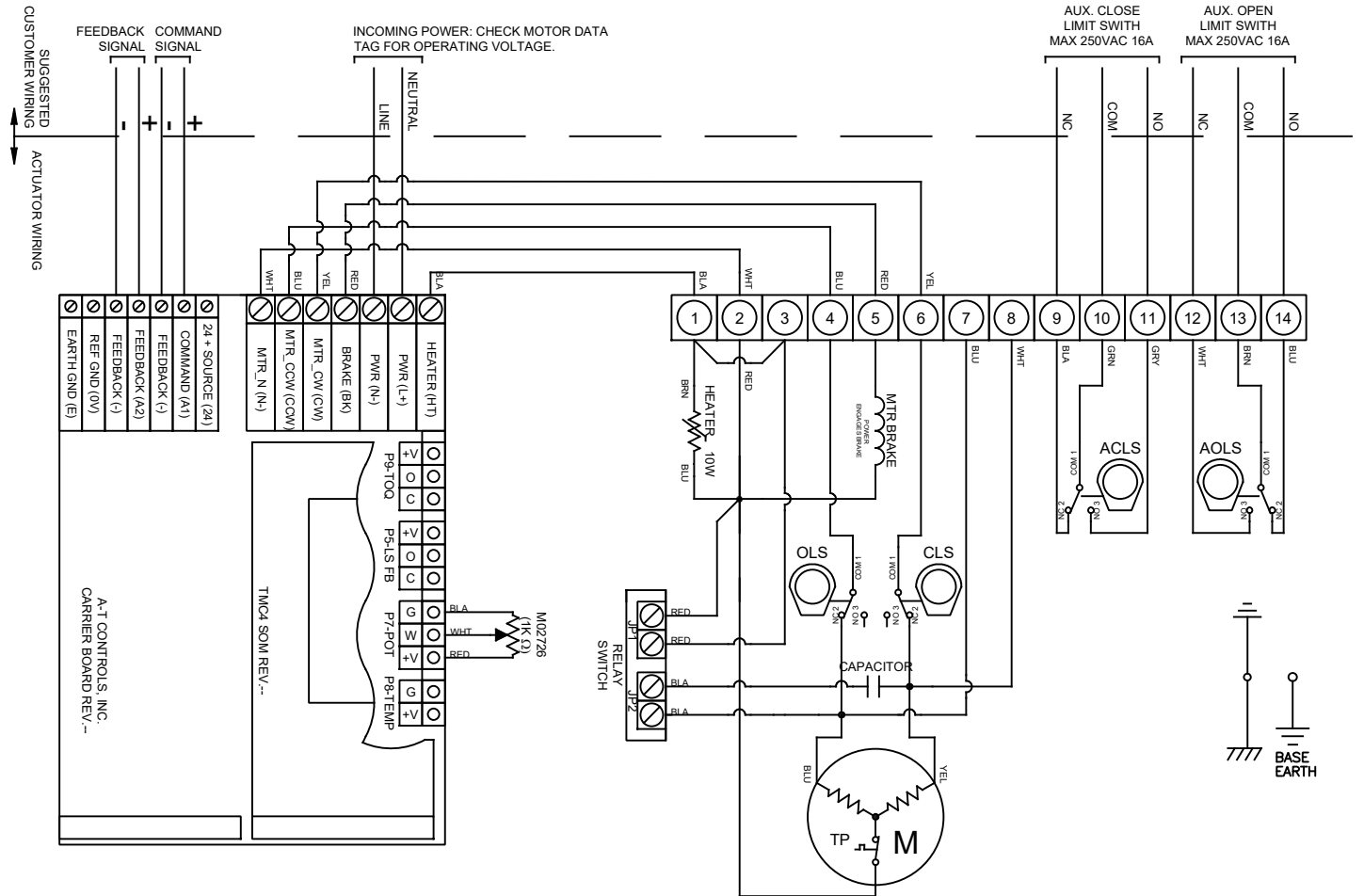
LIMIT SWITCH OPERATION			
SWITCH	CLOSED	INTERMEDIATE	OPEN
CLS 1-2			
CLS 1-3			
OLS 1-2			
OLS 1-3			
ACLS 1-2			
ACLS 1-3			
AOLS 1-2			
AOLS 1-3			

	= OPEN CIRCUIT		= CLOSED CIRCUIT
--	----------------	--	------------------

SYMBOL	DESCRIPTION	RATING
ACLS	AUX. CLOSE LIMIT SWITCH	11A @ 250 VAC
CLS	CLOSE LIMIT SWITCH	
AOLS	AUX. OPEN LIMIT SWITCH	
OLS	OPEN LIMIT SWITCH	

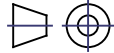
Notes:

- CLS and OLS limit switches set at or just outside of calibrated 0 - 100 % operating range to avoid interfering with feedback potentiometer positioning.
- Loss of power will cause spring to return actuator to fail position (limited by adjustable mechanical stop bolt).
- Fail Closed (FC) Model: Fail Position = CW
Fail Open (FO) Model: Fail Position = CCW



9955 INTERNATIONAL BLVD.
CINCINNATI, OHIO 45246
PHONE: (513) 247-5465
FAX: (513) 247-5462

DO NOT SCALE DRAWING



TOLERANCE UNLESS OTHERWISE SPECIFIED:

TWO PLACE DECIMAL DIM: ±0.02

THREE PLACE DECIMAL DIM: ±0.010

ANGULAR DIM: ±0.5°

DRAWN BY

CHECKED BY

RELEASED BY

HEAT #

SHEET 1 OF 1

DATE KJS

DATE TEM

DATE TEM

MATERIAL

DATE 02/22/22

DATE 04/01/22

DATE 04/01/22

DESCRIPTION

SRXM-0300, SRXM-1200 & SRXM-1800 110/220 VAC
CONTROLLED BY TMC4 (TMC-4B002)

DRAWING NO.

SE01805

REVISION

THE DESIGN AND DISCLOSURE CONTAINED IN THIS DRAWING WAS ORIGINATED BY, AND IS EXCLUSIVE PROPERTY OF A-T CONTROLS, INC. IT IS FURNISHED FOR VENDOR INFORMATION ONLY AND IS NOT AN AUTHORIZATION OR LICENSE TO MAKE THIS CONSTRUCTION OR TO FURNISH THIS INFORMATION TO OTHERS. ALL DRAWINGS MUST BE RETURNED TO A-T CONTROLS, INC. ON DEMAND. THIS DRAWING IS NOT TO BE REPRODUCED OR COPIED IN ANY FORM WITHOUT THE EXPRESS WRITTEN PERMISSION OF A-T CONTROLS, INC.